

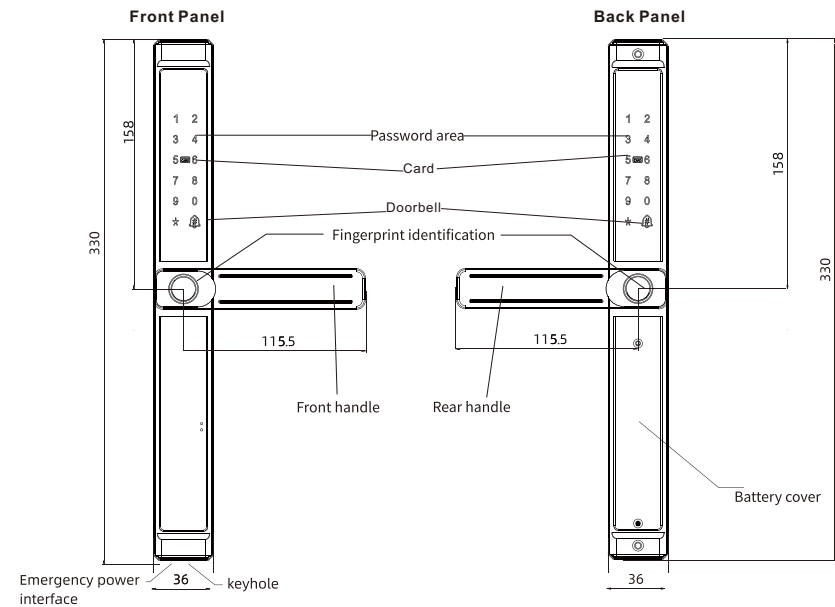
**Operation Instructions
Keyper G100**

Table of Contents

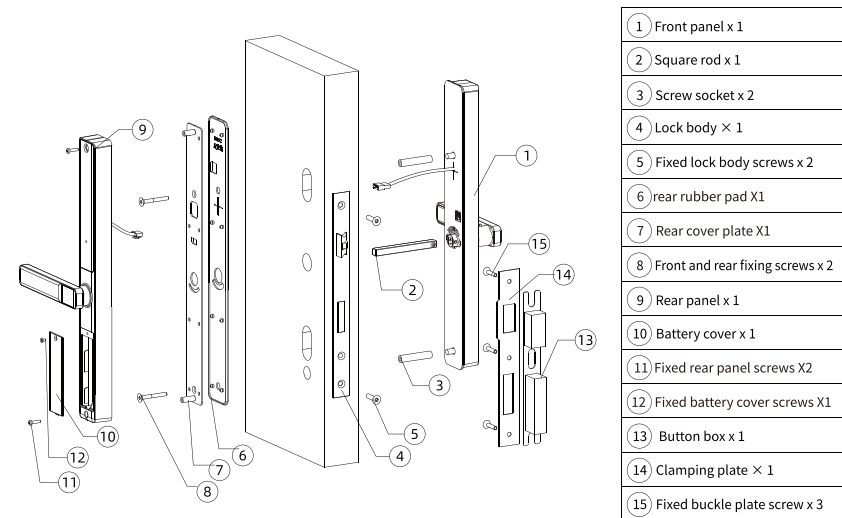
Product Overview	P 01
Installation Guide	P 01
Pre-installation Preparation	P 02
Lock installation	P 03
Check After Installation	P 03
Function and Operation	P 04
Other instructions	P 08
Tuya APP Operation Instructions	P 09
Important Notes	P 12

*The images in this manual are for reference only; please refer to the actual product.

Product Overview



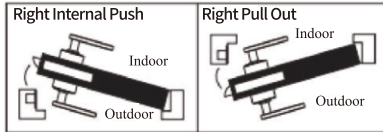
Installation Guide



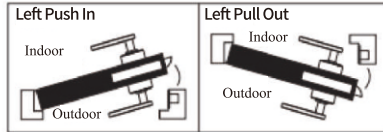
Pre-installation Preparation

1. Confirm the door opening direction

① Open the door right



② Open the door left

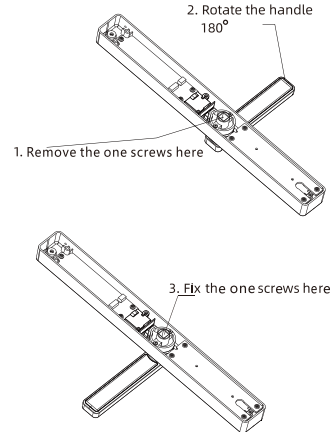
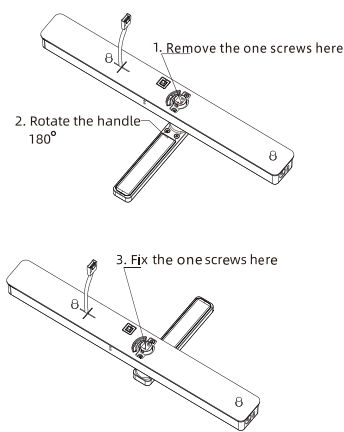


2. Left and right adjustment methods for locks

If reversing is required, follow the following method (the reversing method for the front and rear panels is the same, with opposite directions)

Front handle reversing

Rear handle reversing

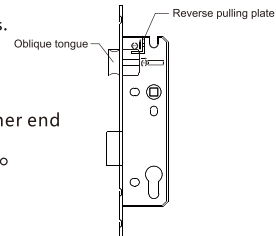


3. Method for reversing the locking tongue of the inner and outer doors

According to your actual needs.

The inner and outer direction of the lock body is changed as follows.

- ① Pull the diagonal tongue reversing paddle over the other end
- ② Push the diagonal tongue into the lock body and rotate 180°



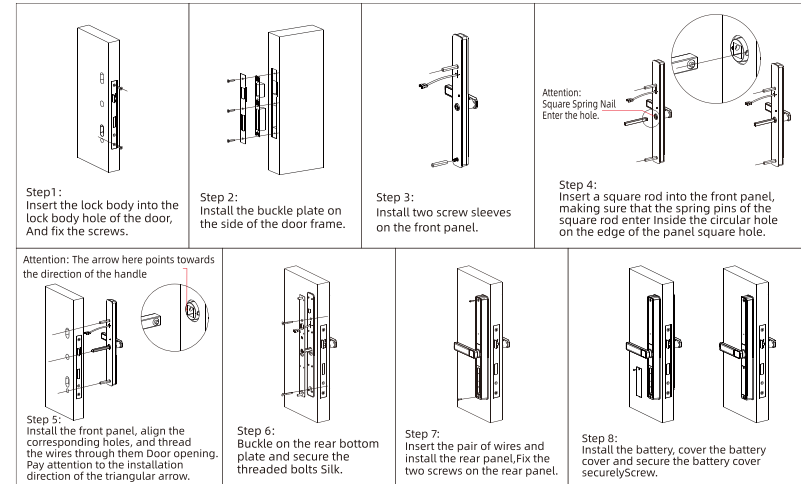
4. Determine the appropriate accessories according to the door thickness

Door Thickness	Square steel bar 8*8*120 with holes	Casing	Top screw	The screw below
25-40			M4*25	M4*25
40-50	After installation, leave 10mm of the bar, and cut off the remaining excess.	25MM	M4*25	M4*25
50-60		35MM	M4*75 bamboo joint screw	M4*75 bamboo joint screw
70-100			M4*75 bamboo joint screw	M4*75 bamboo joint screw

Lock installation

1. Drill the hole following the installation template provided.

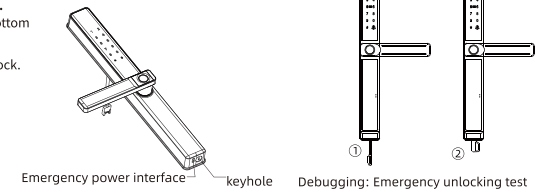
2. Install the lock according to the diagram below:



Check After Installation

1. The initialization password for the lock is 123456. Enter 123456 to test whether the lock can be unlocked properly.

2. Test emergency key unlocking.
 1. The keyhole is located at the bottom of the front lock.
 2. Insert the key and rotate to unlock.



Function and Operation

1. Terminology, function key description

- **Administrator information:** refers to the administrator's fingerprint, password or card.
- **Unlock information:** refers to the input fingerprint, password or card information (including administrators and ordinary users).
- **** key:** Used to delete an input or return to previous step during setup.
- **"#" key:** Used as a confirmation key.
- **ID:** ID no. is given for each registration.

2. Initial State (Factory Reset State)

- Any fingerprint, card or password can be unlocked in the initial state.
- After the administrator information is registered, only the enrolled fingerprint, card or password can be used to unlock the door.
- Language can only be switched in the initial state. To change the language, enter the shortcut key shown in the table below and press "#" to confirm:

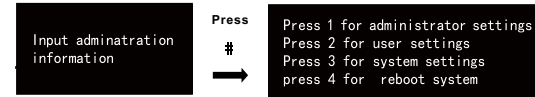
Shortcut key	Language
555666880	Chinese
555666881	English (Factory Default)
555666882	Vietnamese
555666883	Portuguese
555666884	Arabic
555666885	Russian
555666886	Thai
555666887	Spanish
555666888	Indonesian

- To operate the action as shown in the table below, enter the shortcut key in the initial state then press # to confirm:

Shortcut key	Feature	Function description
*#00#	Querying the software version	Example Query the current software version
*#01#	Aging mode	Check whether the circuit board hardware is normal
5#	Turn on normal mode	When this function is enabled, you can open the door by simply pressing the handle.

3. Enter the Setting Mode

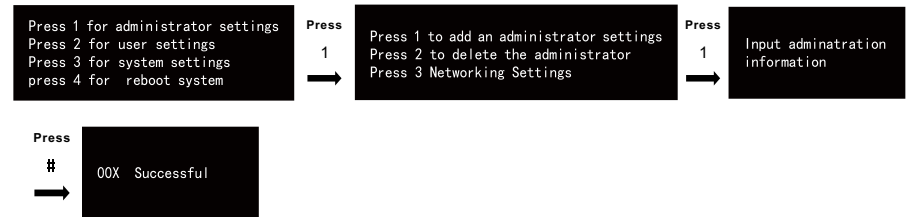
- Touch the keypad to light up the screen, then press "*" followed by the "**#" key to enter the Setting Mode.
- In the Setting Mode, enter the administrator code, then press "#" to proceed
Note: The default administrator password is 123456



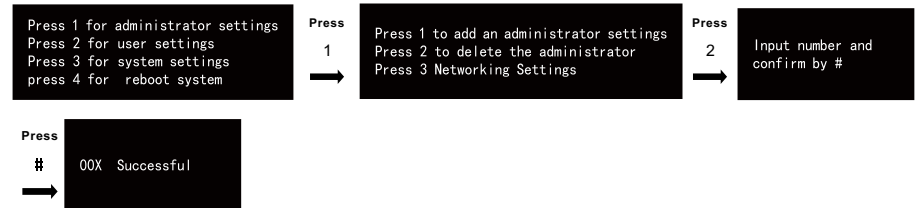
4. Administrator Setting

- **Register Administrator Information (Password/Fingerprint/Card)**

Note: During the input process, the fingerprint must be entered 5 times. The password should contain 6 - 8 digits and must be entered twice for confirmation, then press "#" key to proceed. For card registration, tap the card once only.

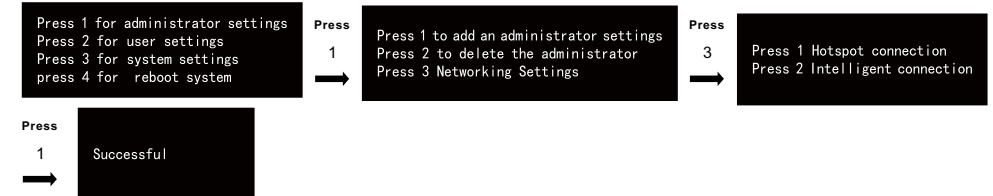


- **Delete Administrator Information**

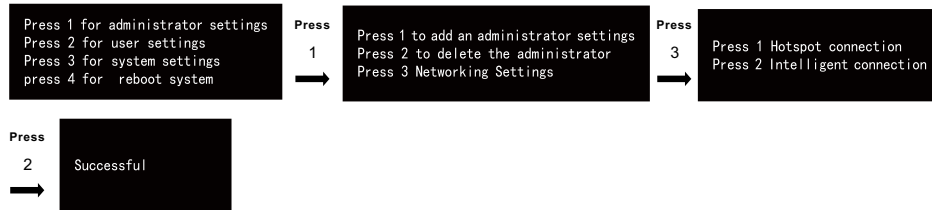


- **Networking Settings**

Hot spot connection - Configure for Tuya App Connectivity

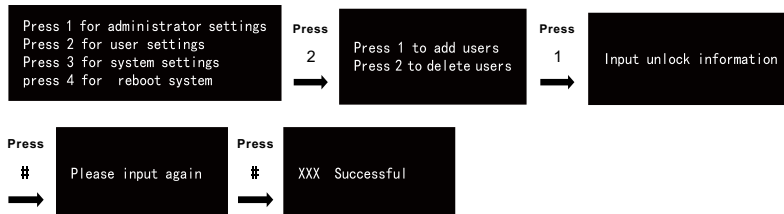


- **Intelligent connection**

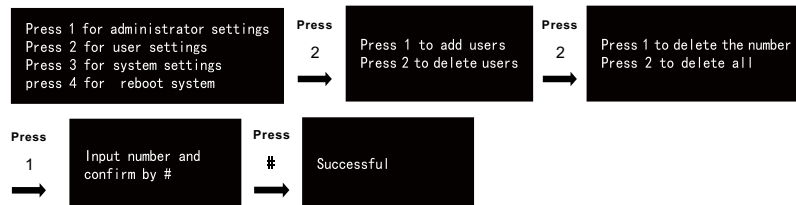


5. User Settings

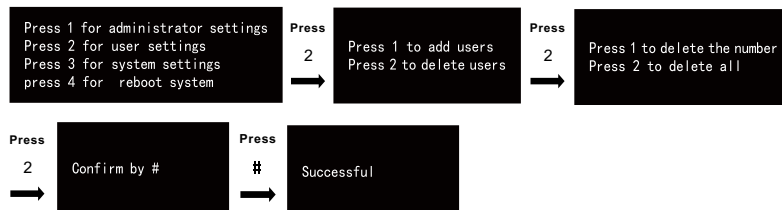
- **Register User Information (Password/Fingerprint/Card)**



- **Delete User - Delete by ID**



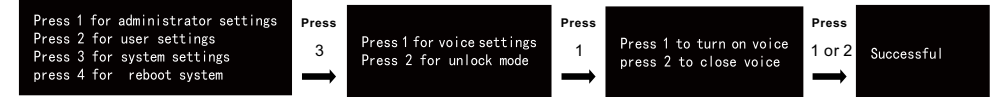
- **Delete User - Delete All**



6. Set the system

- **Voice Settings**

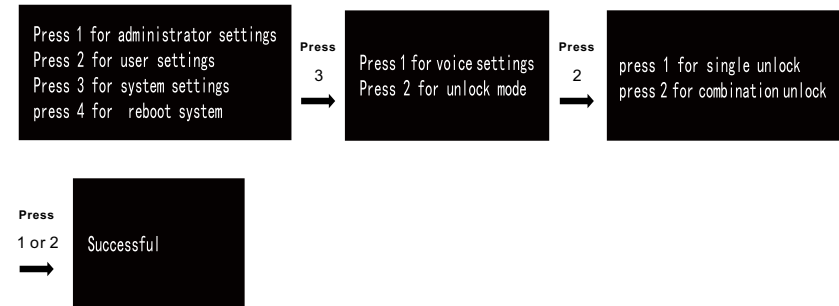
This setting enables or disables the voice guidance



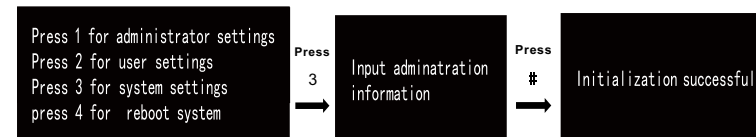
- **Unlocking mode**

This setting sets the lock to operate in one-way or two-way unlocking mode.

Single unlock : Unlock with 1 way
Combination unlock : Unlock with 2 ways



7. Restore factory Settings



Other instructions

- **5 Mins Lock Out:** If unauthorized unlocking information is entered incorrectly for more than 5 consecutive times within 5 minutes, the system automatically enters the invalid input state. The invalid input state lasts for 5 minutes.
- **Fake Password Function:** You can add some irrelevant codes before or after the password, then press # to confirm. The password must be included in the input. The irrelevant code can add up to 16 digits.
- **Low Battery Warning:** When the battery voltage drops below 4.5V, a low-battery alarm will sound each time the door is unlocked. The lock can still operate approximately 50 times after the warning. If unlocking becomes delayed by around 5 seconds, please replace the batteries immediately before further use. The product uses four 1.5V Alkaline AA batteries.
- **Doorbell Function:** Press the doorbell icon on the front panel of the lock to ring the bell
- **Mechanical Key:** The keyhole is at the bottom of the lock. It is advised to keep at least 1 key out of the house for emergency use when needed.
- If no operation is performed for more than 10 seconds, the system automatically exits.

Tuya APP Operation Instructions

Step 1 App Download



Download Tuya APP

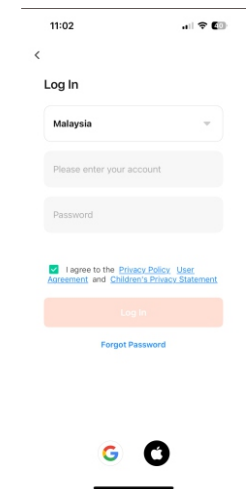
Step 2 App Registration and Login

App Registration:

For new users, please register by clicking "Sign Up." A verification code will be required to complete the registration. Once verified, you can set your password.

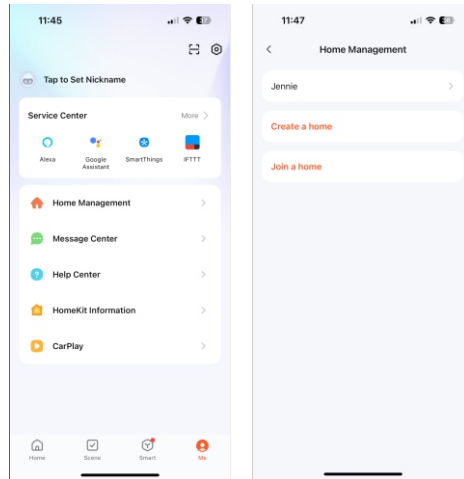
Login:

After registration, log in to your account using your credentials.



Step 3 Create Home

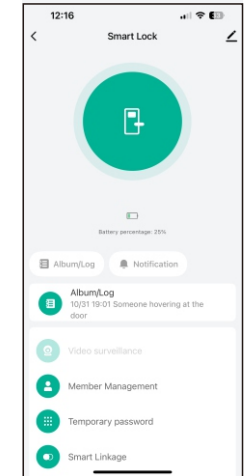
- After successfully registering and logging in, tap on the “Me” icon to create your home under “Home Management”.
- Each account can create and manage multiple homes, with devices grouped by rooms within each home.
- You can also set role permissions for device management on the same page.



Step 5 Features of the App

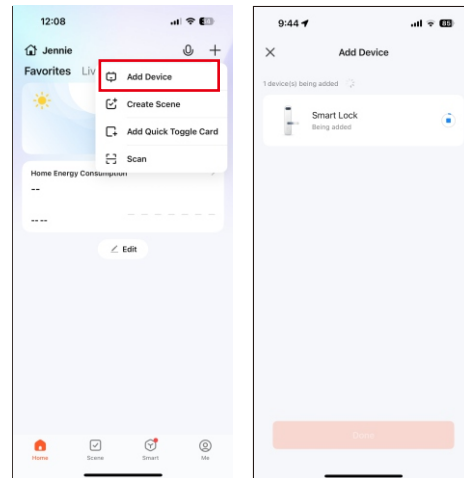
In the App, you could

- **Remotely control the lock** - When the doorbell is pressed, the app allows you to approve or reject access.
- **Check the lock's activity** - View detailed logs of all entries and actions
- **Set a temporary password** - Create one-time or time-limited access codes
- **Add members** - Grant family members or guests access to the lock
-



Step 4 Add Devices

- in the “Home” page, click the “+” icon on the top right corner to **Add Device**.
- Follow the **Net Config Setting** (refer pg 5) to allow the lock to be searchable.
- Look for the lock and connect to your home Wifi.
- Once succeeded, press finish



Important Notes

- Do not install the product in an outdoor environment with direct exposure to weather.
- Do not use the device in the environment at too high or too low temperature, never expose the device under strong sunshine or too wet environment. The suitable temperature for the product and accessories is -25°C~+80°C.
- To prevent dirt on keypad and fingerprint area sensor, we recommend to use soft cloth for wipes. Do not spray water directly or wipe with chemicals such as benzene, gasoline or alcohol.
- It is recommended to replace / recharge the battery immediately when "replace the batteries" reminder is triggered to avoid any inconvenience.
- Do not use rechargeable batteries. Only alkaline batteries are recommended.
- When the battery is out, an emergency power supply can be provided through the emergency power supply port via type-C USB cable for emergency access (not for charging)
- Warning:
 - replacement of a battery with an incorrect type that can defeat a safeguard;
 - disposal of a battery into fire or a hot oven, or mechanically crushing or cutting of a battery, that can result in an explosion;
 - leaving a battery in an extremely high temperature surrounding environment that can result in an explosion or the leakage of flammable liquid or gas; and
 - a battery subjected to extremely low air pressure that may result in an explosion or the leakage of flammable liquid or gas.
- The mortise may be damaged if the door is closed hard with the deadbolt protruded.
- Please keep at least 1 mechanical key override out of the house (office / parents' house) for emergency use when needed.
- Do not attempt to disassemble the digital door lock by your self. By doing so, you may get an electronic shock and damage the product.
- Do not use force with a tool onto the product.